

An MHG Company

PanoramicTM

Balustrades and Frameless Fencing

solos  glass
see the possibilities

Panoramic™ Balustrades and Frameless Fencing

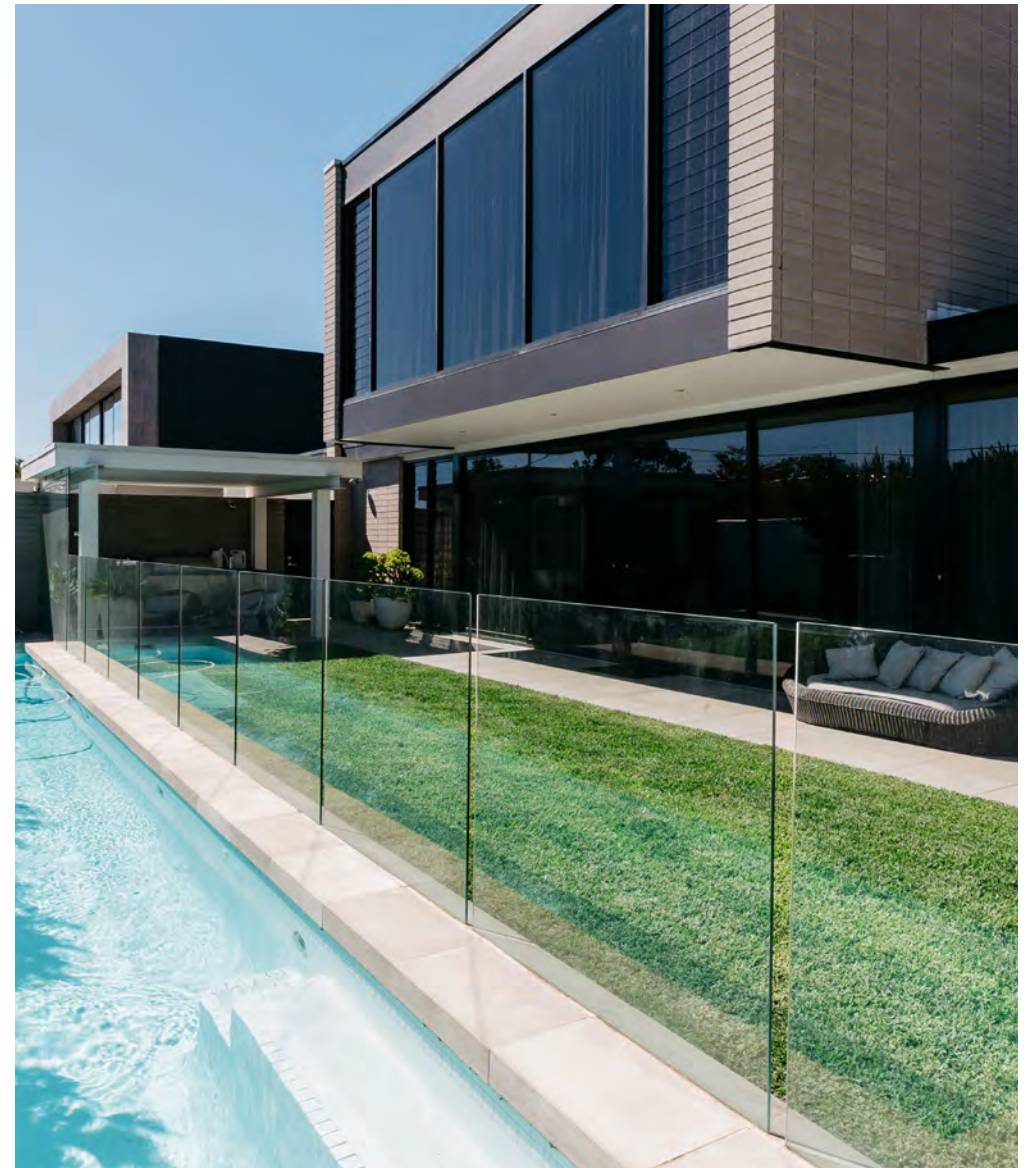
What is Panoramic™?

Panoramic™ is a range of Grade A safety glass solutions suitable for both structural and infill balustrades and frameless fencing panels.

Ideal for both internal and external applications, Panoramic™ is manufactured to the highest possible quality standards helping to create the ambience associated with greater light and space whilst providing absolute peace of mind.

Available in toughened, laminated or heat treated laminated panels as standard, Panoramic™ fulfils the complete range of glass requirements needed to complement the range of 'deemed to satisfy' structural and infill balustrade panels.

Panoramic™ can also be supplied as a specially designed custom toughened laminate for alternative solutions where handrails are not the preferred option and the difference in levels is greater than 1m.

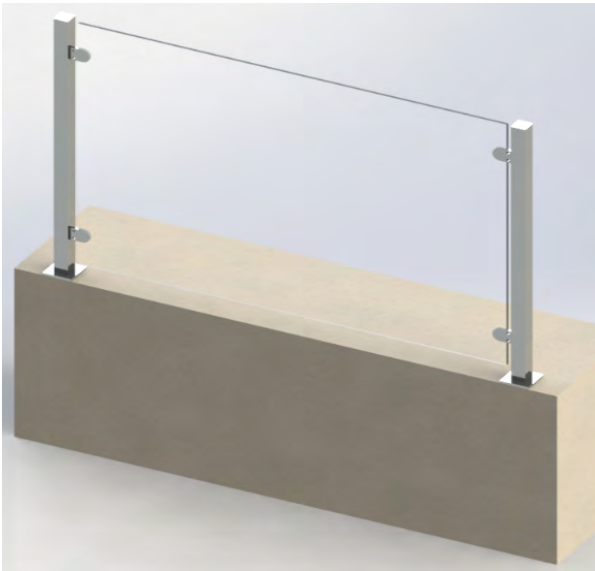


Panoramic™ Balustrades and Frameless Fencing

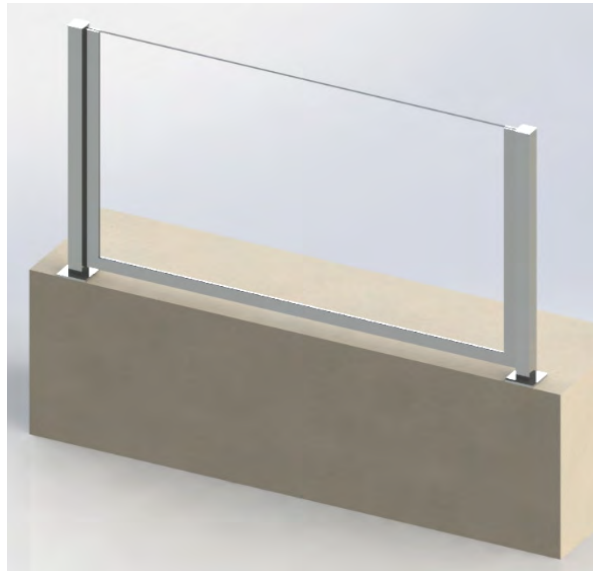
Panoramic™ is particularly suitable for a number of balustrade systems including, but not limited to the following:

Structural Balustrades

Two Edge Supported Structural Balustrade*



Three Edge Supported Structural Balustrade*



Four Edge Support Infill Balustrade



Panoramic™ Balustrades and Frameless Fencing

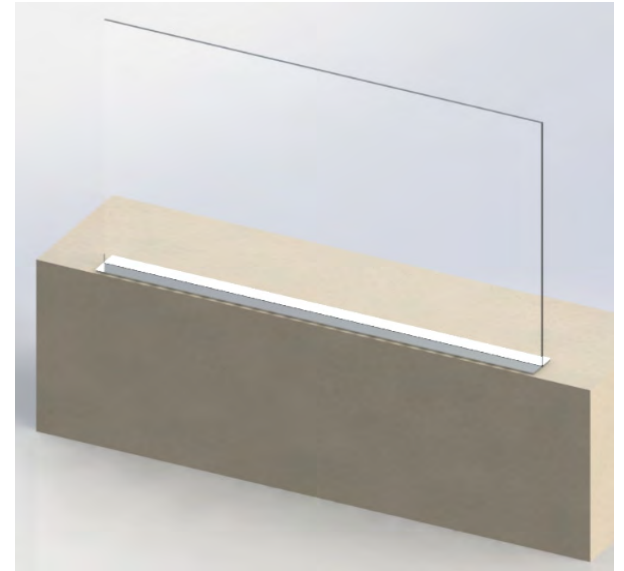
Two Edge Support Infill Balustrade



Two Edge Support Infill Balustrade (Mechanical Fixings)

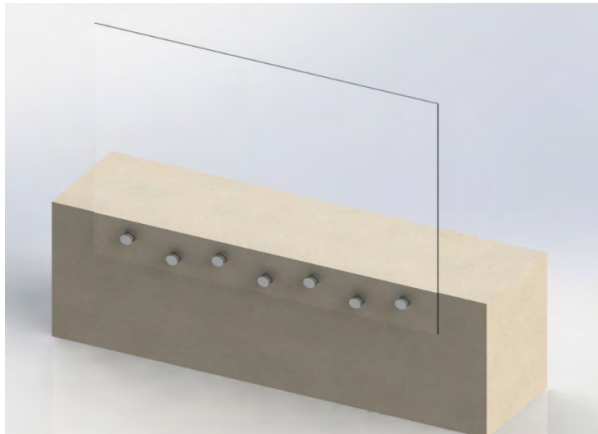
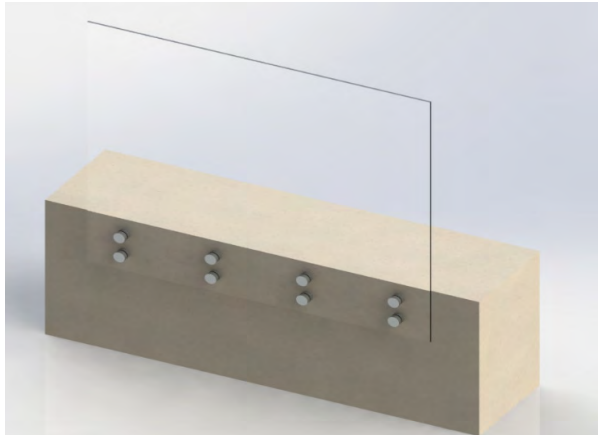


Cantilevered Glass Structural Balustrade*



Panoramic™ Balustrades and Frameless Fencing

Free Standing Point Fixed Balustrade*



Enhanced clarity

Panoramic™ extends design and aesthetic boundaries to maximise the effect of light and space while offering a truly outstanding safety solution. This can be further enhanced by the use of KristalClear™ low iron glass as either the toughened glass or the component glass panels within the laminated glass, offering a clarity and crispness not associated with standard clear float glass.

Durability and stability

When supplied in either annealed or toughened laminated form, Panoramic™ exhibits excellent resistance to moisture and temperature variation when used in external applications. Panoramic™ exhibits outstanding edge stability and adhesion, precluding delamination and yellowing of the interlayer.

However laminated Panoramic™ should not be considered to be 'waterproof' and care should be taken to prevent immersion of the glass edge in water or to allow water to pool on the edges of the glass for extended periods.

Custom engineered handrail free solution

For a solution where handrails are not the preferred option, Panoramic™ can be supplied as a specialist custom laminated product with a site specific certificate of compliance from a consulting engineer.

With this certificate, Panoramic™ can be customised as per the consulting engineers specification.

Each Panoramic™ panel must be specified and signed off by a structural engineer prior to manufacture.

For such applications, Panoramic™ incorporates a specialist interlayer which incurs minimal slumping in the rare occurrence of the glass breaking. In such circumstances the Panoramic™ interlayer is designed to retain an appropriate level of structural integrity and provide a sufficient safety barrier until the panel can be replaced.

All necessary engineering certification can be facilitated through our Customer Service Department to assist in the specification and design process.

*Handrail Free glass balustrades protecting a change in level of greater than 1m are not covered by AS 1288 and must have a Certificate of Compliance from a Consulting Engineer to be considered as an 'alternative solution'.

Panoramic™ Balustrades and Frameless Fencing



Benefits

- Maximises the effect of light and space whilst offering outstanding levels of safety and security
- Wide range of shapes and sizes available, fully compatible with a broad range of fixings
- For laminated Panoramic™ products, a 5 year warranty against delamination is offered. See our Warranty section for further details
- When supplied in any laminated form, Panoramic™ is highly resistant to moisture penetration and temperature variation ensuring it being able to be glazed with an exposed edge
- Wide range of glass types available, including EnVision™ Digitally Printed Safety Glass

Applications

- Balconies and barriers
- Internal and external, structural and infill balustrades
- Pool fencing
- Stairs, landings and walkways